

BLOWER UNIT

BLOWER UNIT

PPF:27200

Removal and Installation

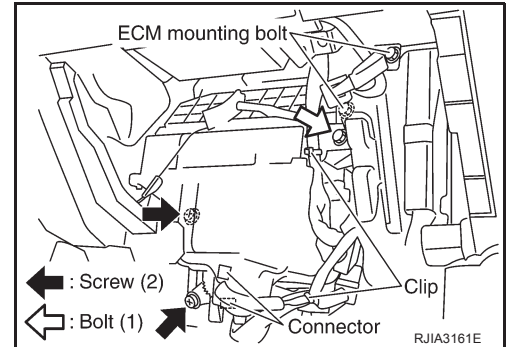
EJS000UL

REMOVAL

1. Remove glove box assembly.
2. Remove glove box cover, instrument passenger lower panel and instrument reinforcement. Refer to [IP-11, "Removal and Installation"](#).
3. Remove ECM with ECM bracket attached.
4. Remove instrument panel mounting screw.
5. Remove blower unit mounting bolt and screw.
6. Disconnect blower motor connector and fan control amp. connector.
7. Disconnect intake door motor connector and harness clips.
8. Remove blower unit.

CAUTION:

Slide the blower unit toward the right, remove location pins (2 pieces), then move it downward.



INSTALLATION

Installation is basically the reverse order of removal.

CAUTION:

Make sure location pins (2 pieces) are securely installed.

A
B
C
D
E
F
G
H
I
K
L
M

ATC

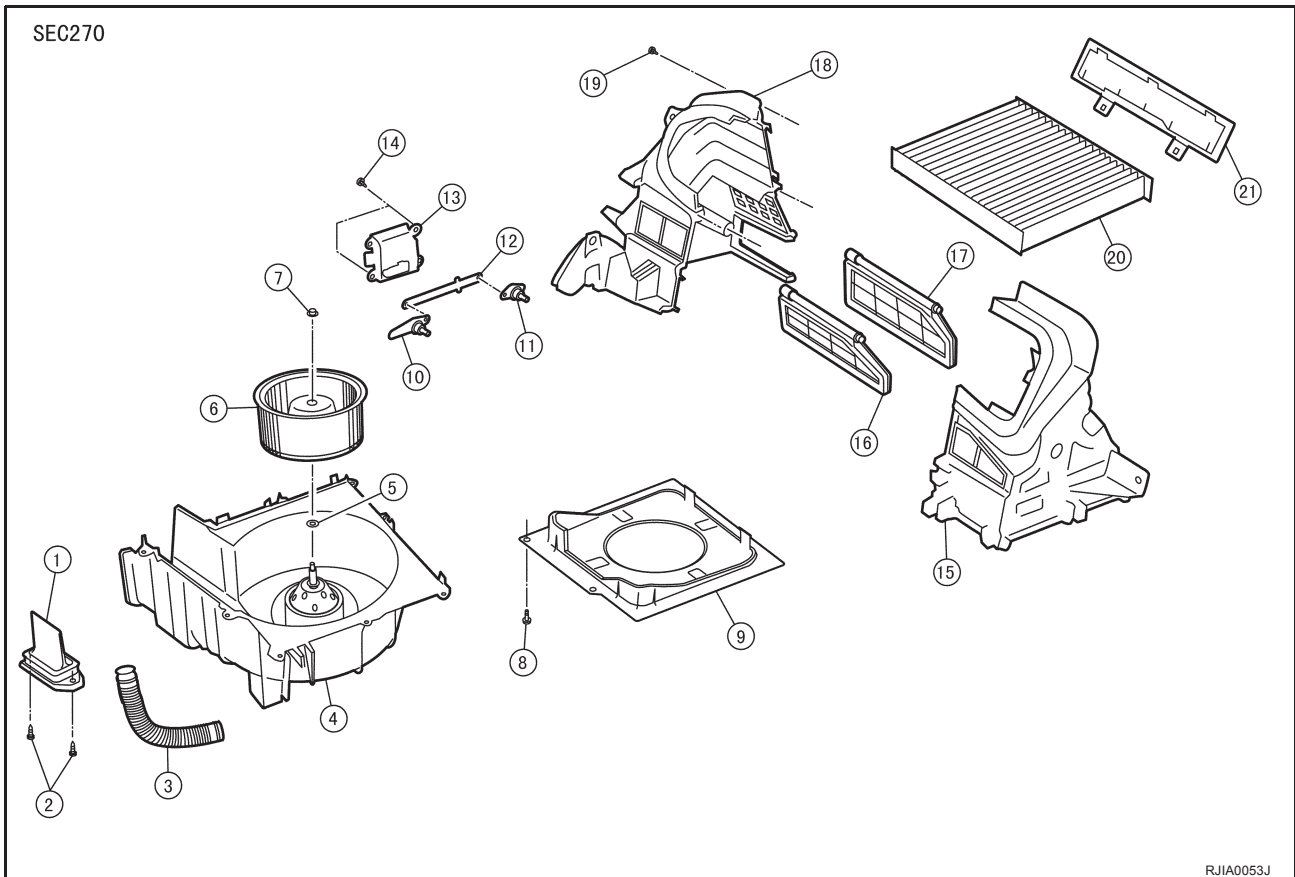
BLOWER UNIT

EJS000UM

Disassembly and Assembly

NOTE:

This illustration is for RHD models. The layout for LHD models is symmetrically opposite.

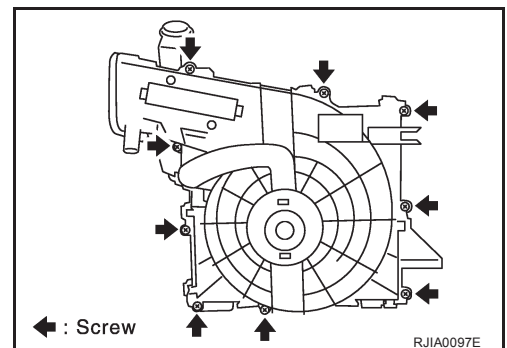


RJIA0053J

- | | | |
|--------------------------|----------------------------|----------------------|
| 1. Fan control amplifier | 2. Screw | 3. Cooling hose |
| 4. Blower motor assembly | 5. Washer | 6. Blower fan |
| 7. Nut | 8. Screw | 9. Bell mouth |
| 10. Intake door lever 2 | 11. Intake door lever 1 | 12. Intake door link |
| 13. Intake door motor | 14. Screw | 15. Upper case 2 |
| 16. Intake door 2 | 17. Intake door 1 | 18. Upper case 1 |
| 19. Screw | 20. Air conditioner filter | 21. Filter cover |

CAUTION:

If retaining tabs are damaged while disassembling blower unit, use 9 screws (27111-2Y000) to assemble blower unit.



RJIA0097E

BLOWER MOTOR

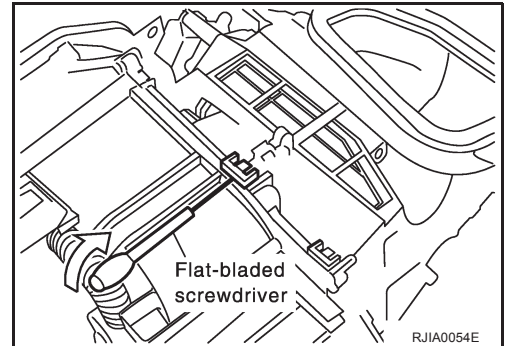
BLOWER MOTOR

PF2:27226

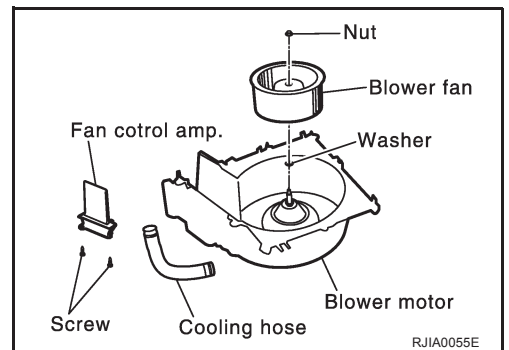
Removal and Installation

EJS004GH

1. Remove blower unit. Refer to [ATC-125, "BLOWER UNIT"](#).
2. Separate blower unit.



3. Remove cooling hose, fan control amp. and blower fan.

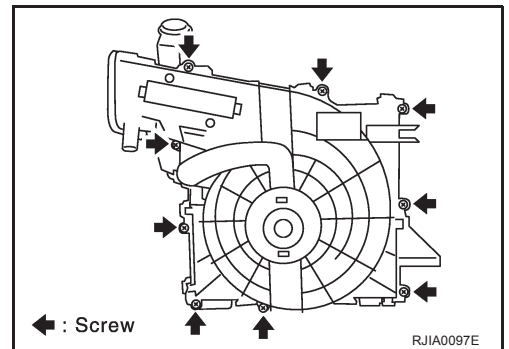


INSTALLATION

Installation is basically the reverse order of removal.

CAUTION:

If retaining tabs are damaged while disassembling blower unit, use 9 screws (27111-2Y000) to assemble blower unit.



A

B

C

D

E

F

G

H

I

ATC

K

L

M